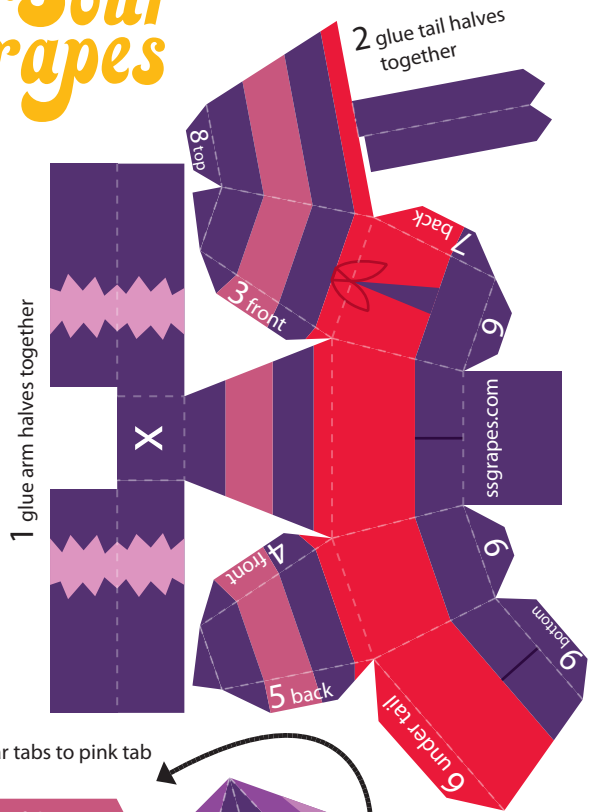
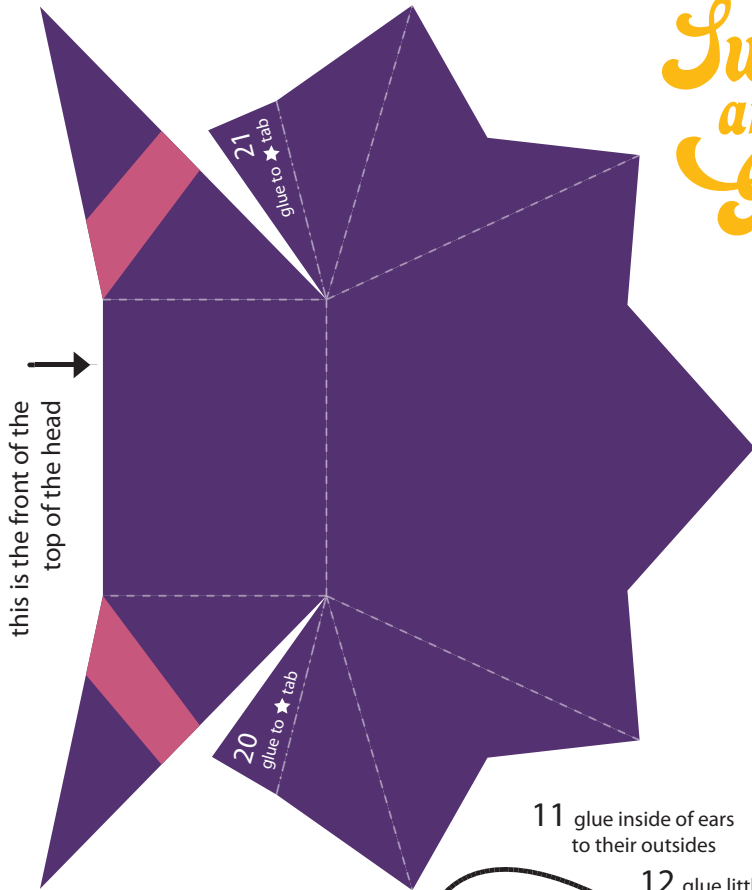
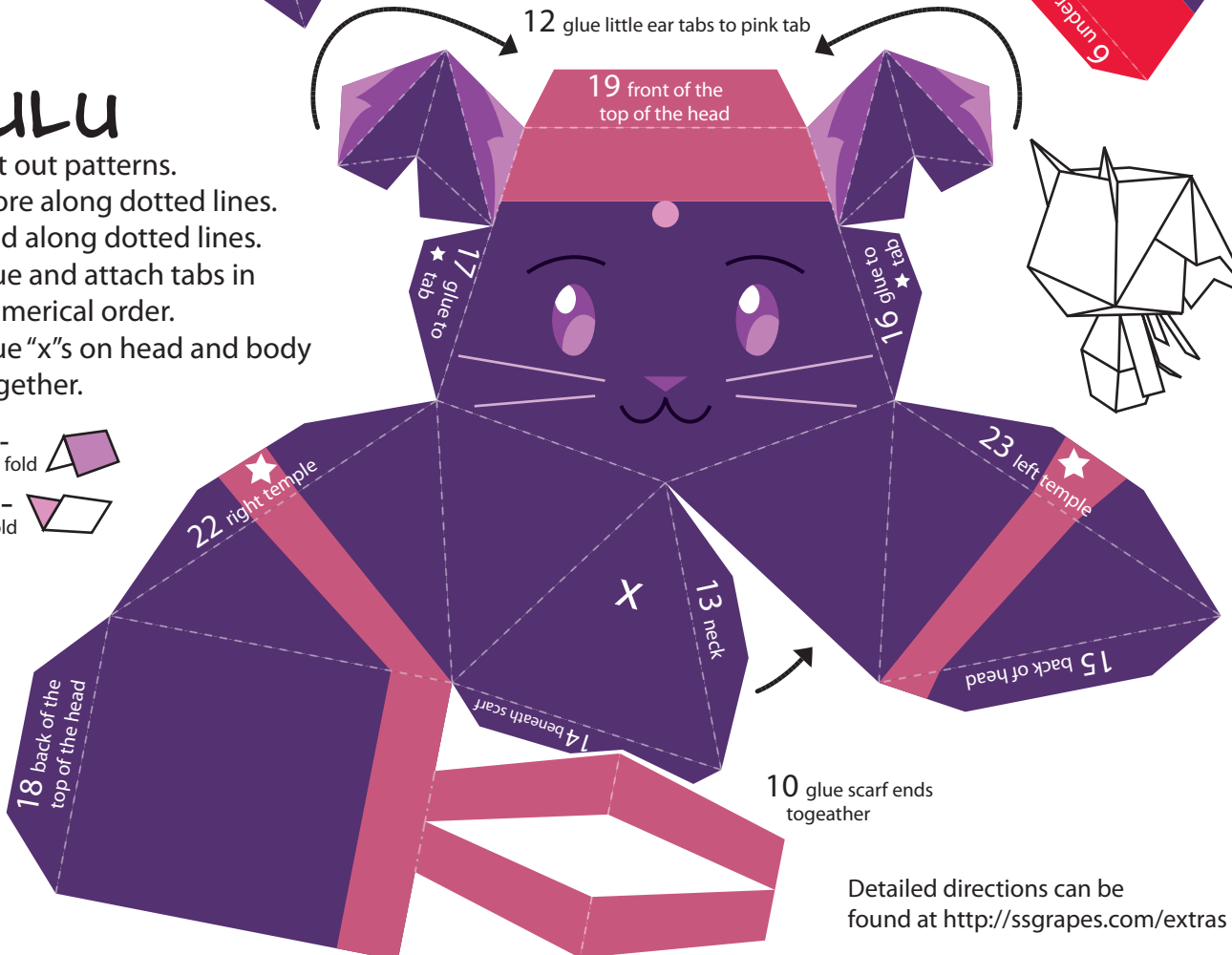
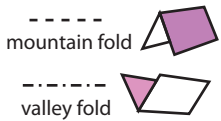


Sweet and Sour Grapes



NULU

1. Cut out patterns.
2. Score along dotted lines.
3. Fold along dotted lines.
4. Glue and attach tabs in numerical order.
5. Glue "x"s on head and body together.



Detailed directions can be found at <http://ssgrapes.com/extras>

Print this on the back
so Nulu's hair is colored on
both sides.

